

Removing the Keyboard

1. Turn off the computer, turn it over.
2. Remove screws 1 - 2 from the bottom case (Figure 1a).
3. Open it up with the LCD on a flat surface before pressing at point 3 to release the keyboard module (use the specific eject stick 4 to do this) while releasing the keyboard in the direction of the arrow 5 as shown (Figure 1b).
4. Carefully lift the keyboard 6 up, being careful not to bend the keyboard ribbon cable 7. Disconnect the keyboard ribbon cable from the locking collar socket 8 (Figure 1c).
5. Carefully lift up the keyboard 6 off the computer (Figure 1d).
6. Reverse the process to install the keyboard (be careful not to bend the keyboard ribbon cable).

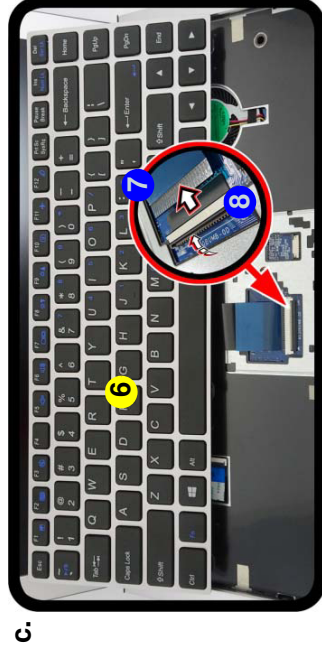
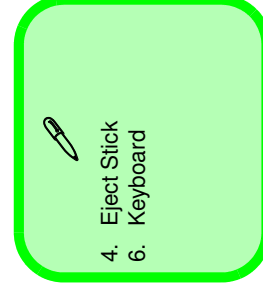


Figure 1
Keyboard Removal

- a. Release the keyboard by pressing at point 3.
- b. Disconnect the keyboard ribbon cable from the locking collar socket.
- c. Remove the keyboard.



Disassembly

Figure 2

Battery Removal

- Remove the screws.
- Remove the screws.
- Remove the bottom case and locate the battery.
- Disconnect the cable and remove the screws.
- Lift the battery off the computer.



Powering the Computer On

After every disassembly, make sure that the bottom case's screws are all inserted and tightened before turning the computer on.



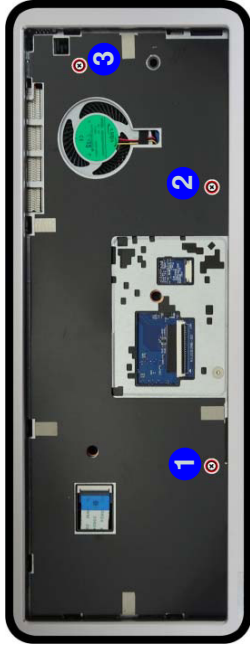
- 14. Bottom Case
- 22. Battery

- 18 Screws

Removing the Battery

- Turn off the computer, turn it over to remove the keyboard (page 2 - 5).
- Remove screws 1 - 3 (Figure 2a).
- Remove screws 4 - 13 on the bottom case (Figure 2b).
- Remove the bottom case 14 up. The battery will be visible at point 15 on the computer (Figure 2b).
- Carefully disconnect the cable 16, then remove screws 17 - 21 (Figure 2c).
- Lift the battery 22 off the computer (Figure 2d).
- Reverse the process to install a new battery (do not forget to replace all the screws and bottom cover).

a.



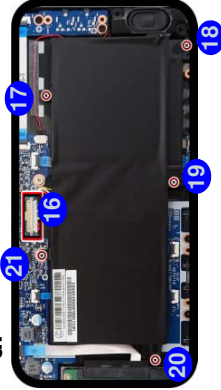
c.



b.



e.



d.

