



**THINK
PENGUIN**

ThinkPenguin.com
1-888-39-THINK (84465)
support@thinkpenguin.com

1. Quick PC Setup	1
2. Intro To GNU/Linux	2
3. Laptop Overview	3
4. Creating Installation Media	4
5. Booting From USB	5
6. OS Installation	6-7
8. System Administration	8
9. Software Licensing	9
10. Security Updates	10
11. BIOS & Boot Menu Keys	10
12. Model Information	10
13. Operating System Version	10

Linux® is the registered trademark of Linus Torvalds in the U.S. and other countries.

Intel, Celeron, and Pentium are trademarks of Intel Corporation in the U.S. and other countries.

The information contained herein is subject to change without notice. The only warranties for ThinkPenguin, Inc products and services are set forth in the express warranty statements accompanying such products and services. Nothing herein should be construed as constituting an additional warranty. ThinkPenguin, Inc shall not be liable for technical or editorial errors or omissions contained herein.

First Edition: May 2022

© Copyright 2022 ThinkPenguin, Inc.



This guide describes features that are common to most computers. Some features may not be available on your computer.

Not all features are available in all editions of GNU/Linux.

This computer may require upgrading and/or separately purchased hardware, modules, and/or software to take full advantage of GNU/Linux's functionality.

See ThinkPenguin.com/support for the latest documentation and support details.

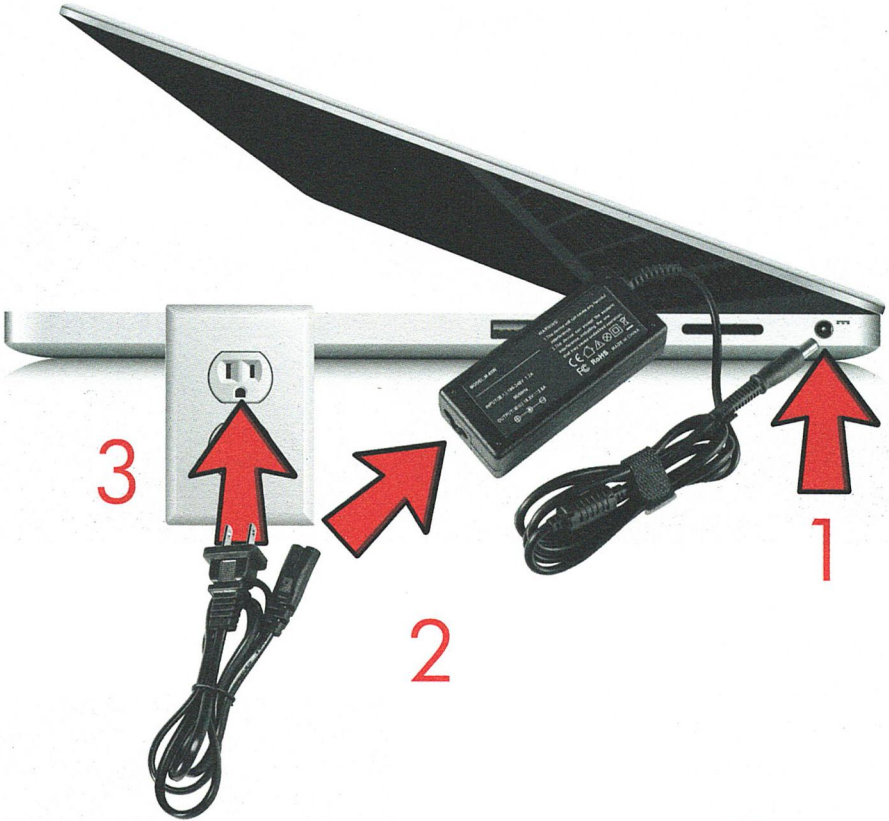
Have questions? Customers can reach out using the contact information below:

Phone: 1-888-39-THINK (84465)

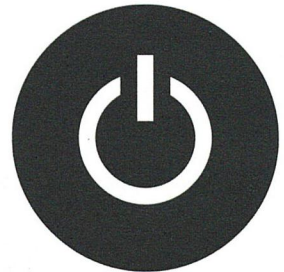
Email: support@thinkpenguin.com

ThinkPenguin, Inc
63 Emerald Street,
#462
Keene, NH 03431
United States

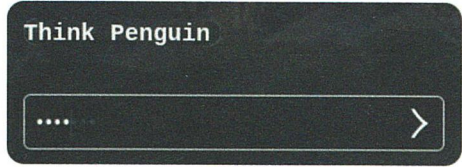
Connect your region specific cable to the power adapter, the cable to the power outlet, and the other respective end to the laptops DC jack.



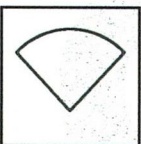
Press and hold the power button for a second to turn the computer on



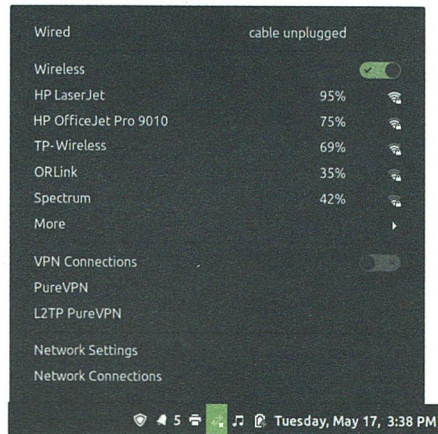
The initial username for login and the administrative user is think and the default password is penguin.

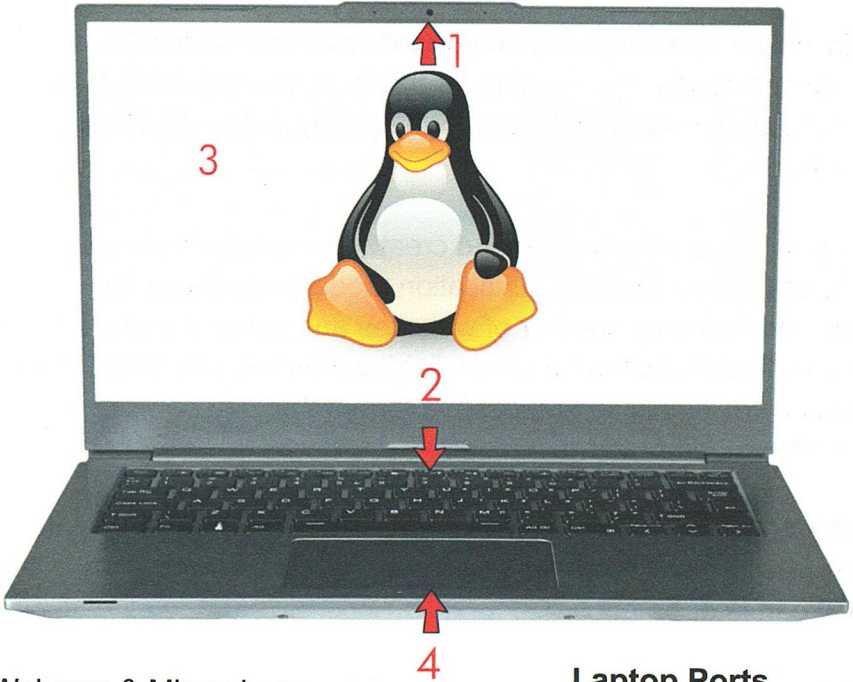


- 1 Main Menu
- 2. Quick Launch Apps
- 3. Open Applications Panel
- 4. Network Applet
- 5. Notification Area
- 6. Desktop Icons



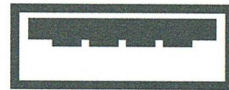
For internet left click on the network icon in the lower right and select an access point.





- 1. Webcam & Microphone
- 2. Keyboard
- 3. Display
- 4. Touchpad

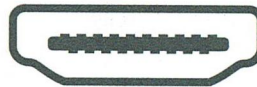
Laptop Ports



USB TYPE A



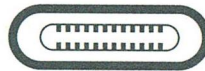
MODEM ETHERNET



HDMI



DCIN



USB TYPE C



AUDIO/MICROPHONE



SD

Special Function Keys



Touchpad



Mute



Vol. Down



Vol. Up



LCD Down



LCD Up



Camera



Sleep

To use special function keys hold down Fn key and tap the special function key

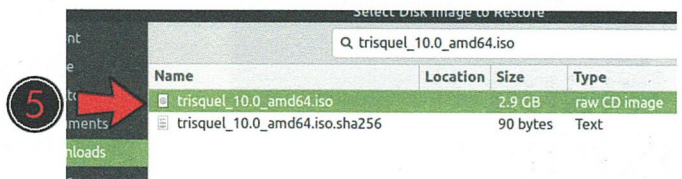
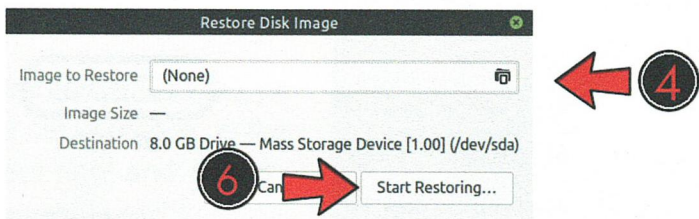
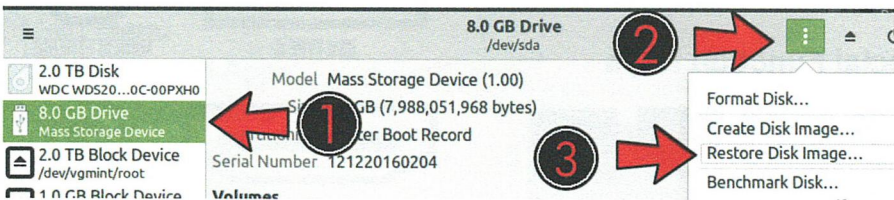


To install an operating system you will need to first acquire or create installation media. One option for this is purchasing installation media from ThinkPenguin.com, or by calling 1-888-39-THINK (84465).

A 2nd option is to download and create the installation media yourself from an ISO file. Installation media is available for download from any number of websites and generally you can find the download links from a given distributions website. An ISO file contains the installation media in a format that can be written to a flash drive and booted.

Most GNU/Linux distributions ship with a partitioning utility called Disks. Disks can be utilized to write an ISO file to a flash drive such that it can later be booted.

To create installation media insert a USB flash drive and open GNOME's Disks utility. Then follow the steps below to create the installation media:

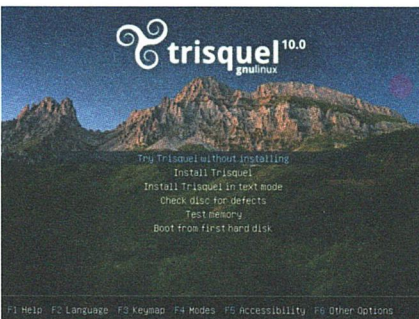
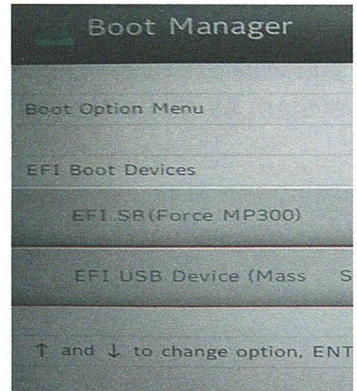


1) To install an operating system on your computer, you will need to connect a USB flash drive that contains your installation media.



2) Upon powering on the system, immediately start tapping the appropriate key to bring up the boot menu. Please reference the back page for the appropriate boot menu key.

3) This will bring up the boot manager. Select the USB mass storage device.

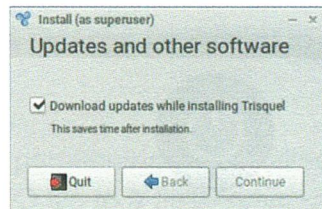
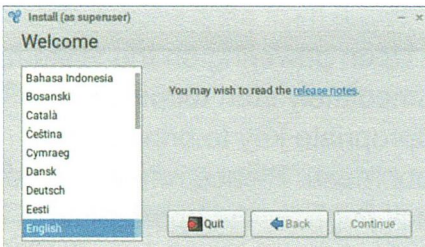


4) If you have selected the correct boot device the system should present you with a menu or otherwise boot up from the installation media. Select the install option to continue.

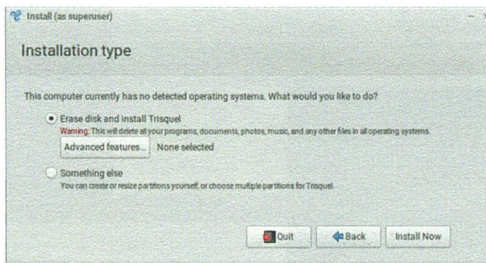
Once the system has booted from the installation media you will be prompted with questions that need to be answered about how you want your system configured.

1) You will be asked about which language pack to install.

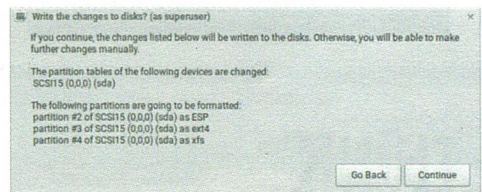
2) Whether or not you would like to download and install updates while performing the installation.



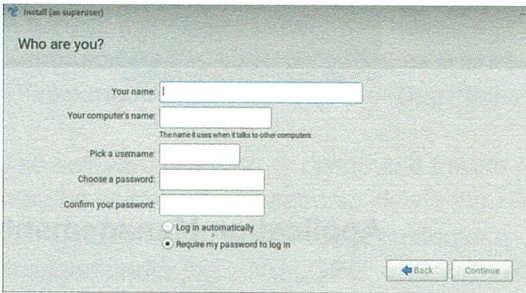
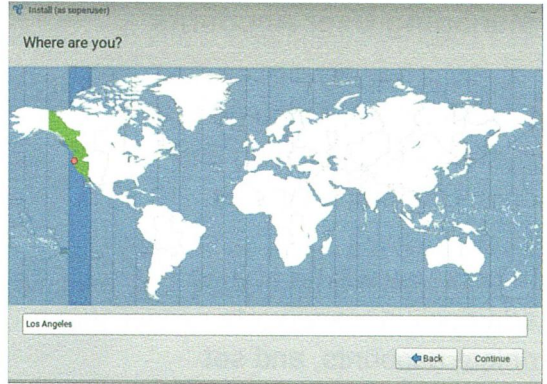
3) When prompted about the type of installation we recommend selecting to erase disk and install, but irregardless of which option you select it's important to have a backup important data on the system as it'll be erased during the OS installation.



4) Once you are confident in your partitioning scheme click the continue button to continue.

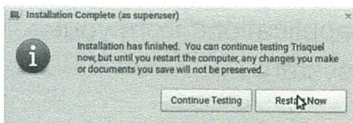


5) You will be asked about what region and time zone you are in.



6) You will be asked for a name, computer name, username, and password.

7) In the final step you will be prompted to remove the installation media and asked to restart.

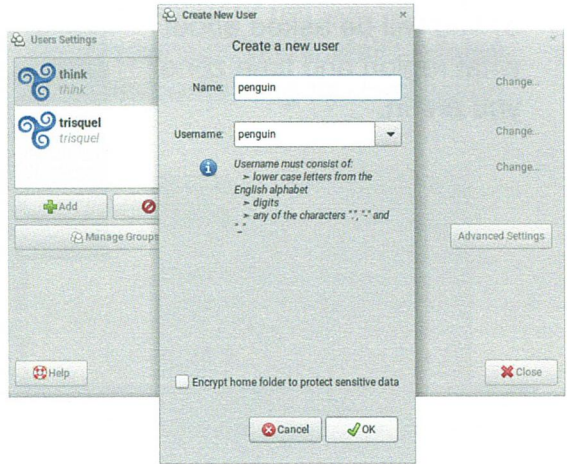


Managing User Accounts

From the Main Menu go to System Administration and open Users and Groups.

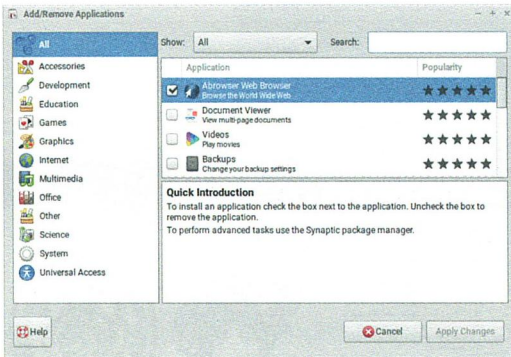
In here you will be able to add new user accounts, delete accounts, and set which users have administrative privileges.

While not strictly required it is generally a good idea to at least change the default password upon receiving a new system or device.



Application Management

In the Main Menu you will see an icon for managing applications. Click it. From here you can search for, browse, install, and remove applications from your system.



Offer of Source for GNU GPL and LGPL Software

Some products are distributed and may contain free software (software licensed in a way that allows you the freedom to run, copy, distribute, change, and improve the software). As a part of this product, ThinkPenguin, Inc may have distributed to you hardware and/or software, or made electronic downloads available to you that are licensed under a free software license.

For at least three years from the date of distribution of the applicable product or software, we will give to anyone who contacts us at the contact information provided below, for a charge of no more than our cost of physically distributing, the following items:

A copy of the complete corresponding machine-readable source code for programs listed below that are distributed under the GNU GPL.

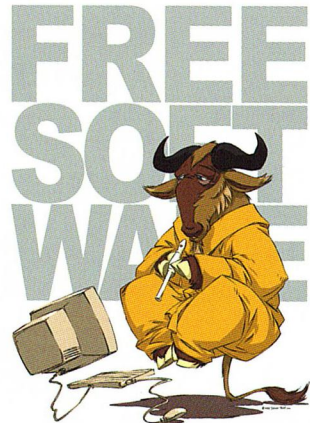
A copy of the corresponding machine-readable source code for the libraries distributed under the GNU LGPL, as well as the executable object code of Thinkpenguin, Inc, work that the library links with.

The software included or distributed for the product, including any software that may be downloaded electronically via the internet or otherwise (the Software) is licensed, not sold. The produce customer may modify any of the Libraries licensed under the GNU LGPG, and then re-link to produce a modified executable containing the modified Library.

Contact information for
Requesting Source Code:

Source Code Manager
ThinkPenguin, Inc
63 Emerald Street, #462
Keene, NH 03431
United States

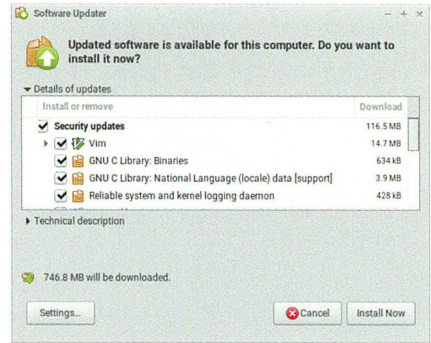
Tel: 1-888-39-THINK (84465)
E-mail: sales@thinkpenguin.com



THINK PENGUIN

These images are available under the GNU General Public License, version 3 or any later version, or the GNU Free Documentation License, version 1.1 or any later version.

It's generally a good idea to apply security updates as soon as they become available. While GNU/Linux does not require anti-virus or anti-malware software and is generally considered to be very secure out of the box it is still important to apply security updates in a timely fashion.



From the Main Menu go to System / Administration > Software Updater / Software Manager and install any security updates presented.

BIOS Key: F2

Boot Menu Key: F7

Model #: TPE-PENJ4LAP

Distribution: Linux Mint 20